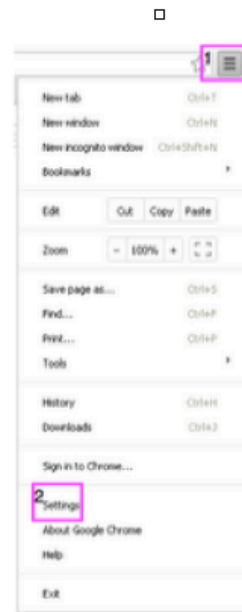


Using Spell Check with Your New Email

Internet Explorer

A plugin is required. Please go to <http://iespell.com/> to download the plugin.

Chrome



1. Click on the Control button.
2. Click on Settings
3. Scroll to the bottom of the page and click on Advanced Settings

3 Show advanced settings...

Put a check next to

A black arrow points from the text 'Put a check next to' to the checkbox for 'Use a web service to help resolve spelling errors' in the Privacy settings section.

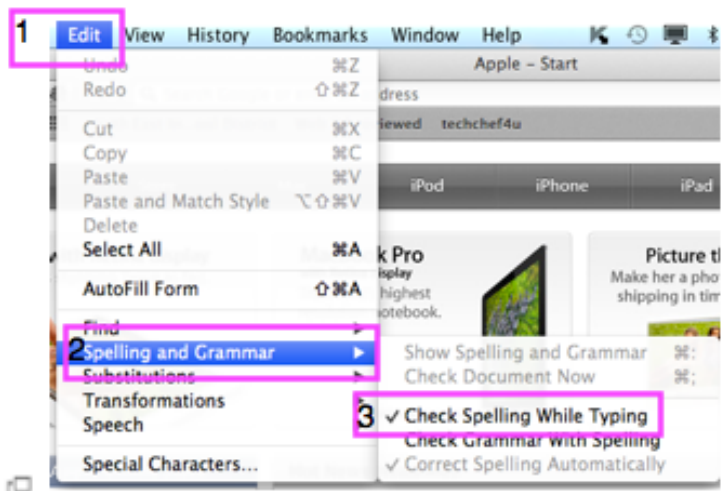
Privacy

Content settings... Clear browsing data...

Google Chrome may use web services to improve your browsing experience. You may optionally disable these services. [Learn more](#)

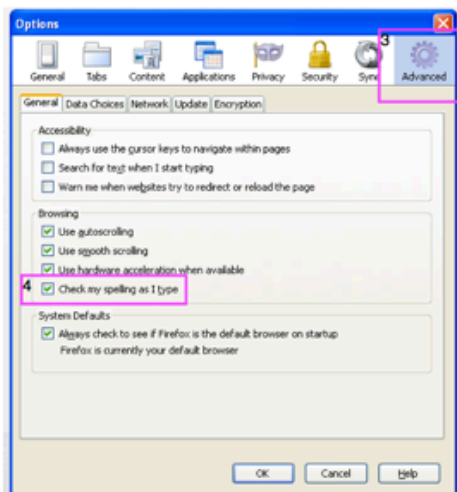
- Use a web service to help resolve navigation errors
- Use a prediction service to help complete searches and URLs typed in the address bar
- Predict network actions to improve page load performance
- Enable phishing and malware protection
- Use a web service to help resolve **spelling** errors
- Automatically send usage statistics and crash reports to Google
- Send a 'Do Not Track' request with your browsing traffic

Safari



1. Click on Edit
2. Click on Spelling and Grammar
3. Check the box next to Check Spelling While Typing

Firefox



1. Click on the Home icon at the top right.
2. Click on the Settings icon at the bottom right side of the screen.
3. Click on the Advanced icon.
4. Check the box next to Check my spelling as I type.